

# Saugerties

Where is Saugerties? [\(Click Here\)](#)



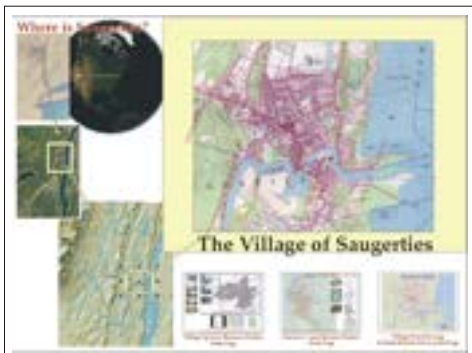
## Your Place In History

These pages customized for

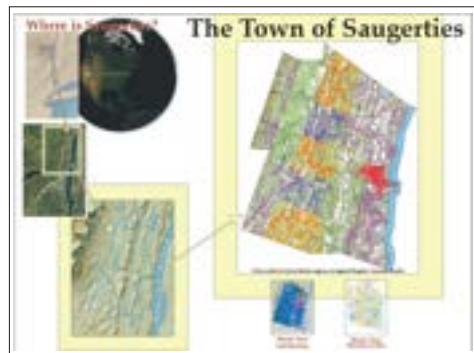


# A History Atlas

**Michael Sullivan Smith**



Village Research Main Page



Town Research Main Page



A compilation of all the early texts on Saugerties history



An illustrated history of the Town, Village and larger region of Saugerties



Michael Sullivan Smith's "Place in History"

Click on an image to go to the section



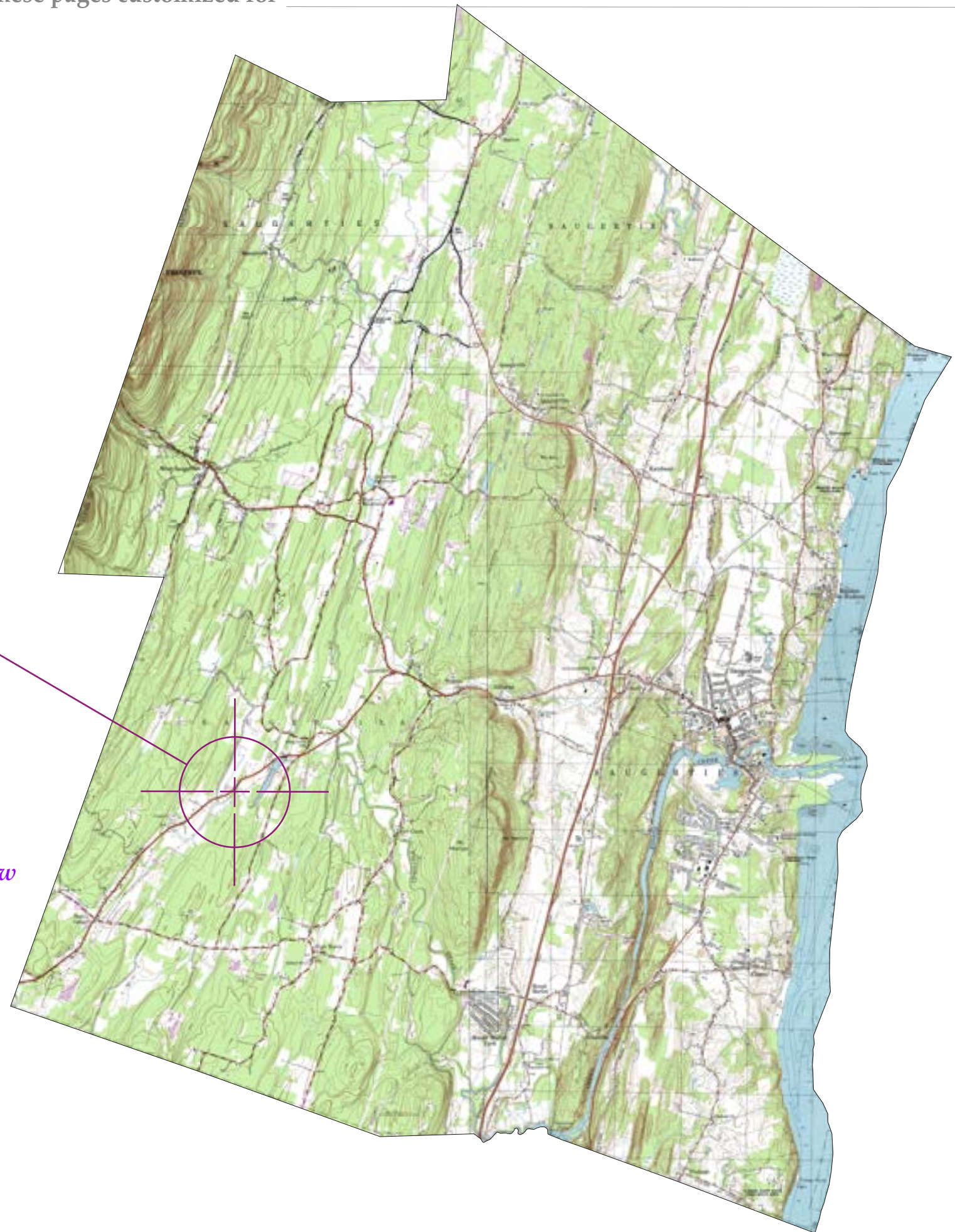
# A History Atlas of Saugerties

These pages customized for \_\_\_\_\_



## Your Place In History

*The United States Geological Survey began creating and publishing topographic maps of the land of Saugerties in the late 19th century. The small squares on these maps are houses. With each new update of maps new houses were added. Engraving was first used for these maps. Later maps were photo lithographed. The darker black squares with sharper edges are the oldest houses because of the engraved original. More recent additions are a lighter shade of black and noticeably fuzzier. In this topo map the original dates back almost 50 years. Go to the historic maps section of the atlas to check corresponding houses on topos made as early as 1893.*



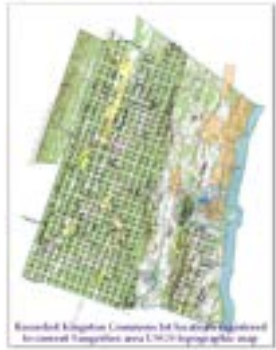
[Return to Main Page](#)

Current Saugerties area USGS topographic map



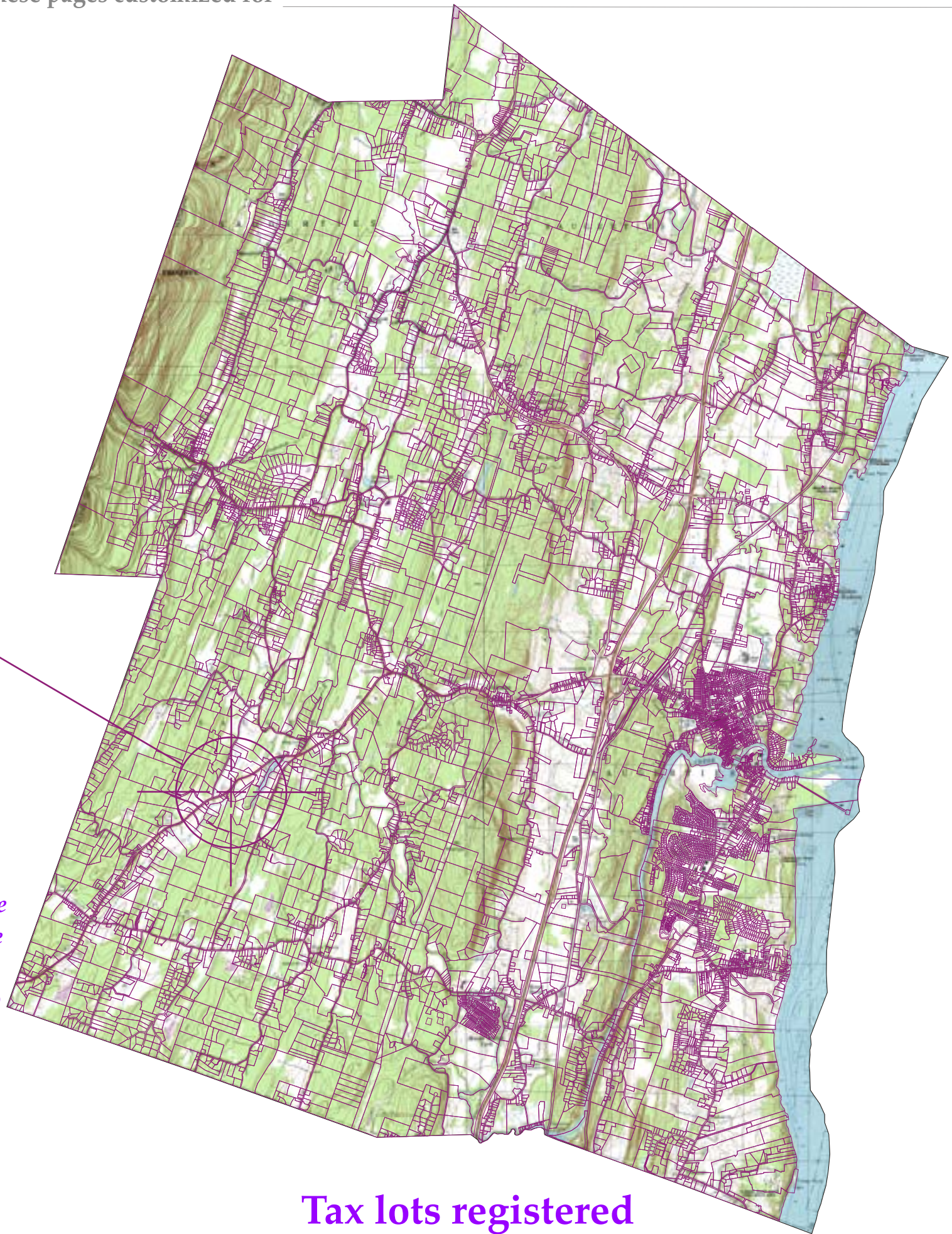
# A History Atlas of Saugerties

These pages customized for \_\_\_\_\_



## Your Place In History

*Before the early 1970's there was no overall mapping of property lines for Saugerties. Computers and Global Information Systems became useful for planning in the late 1990's making the relationship between property lines and landform features an easy way to evaluate the past patterns and future growth potential of the town. Saugerties continues to be divided and so the property lines are constantly being added and sometimes joined. Ulster County maintains a "parcel viewer" on the County web site that is open to the public and is kept current.*



**Tax lots registered to current Saugerties area USGS topographic map**

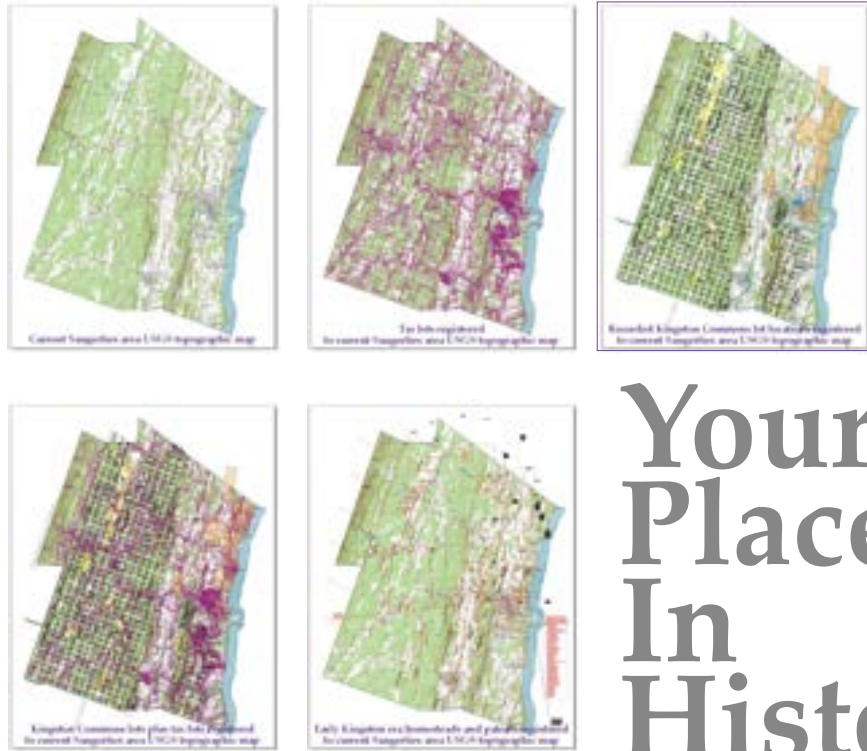


[Return to Main Page](#)



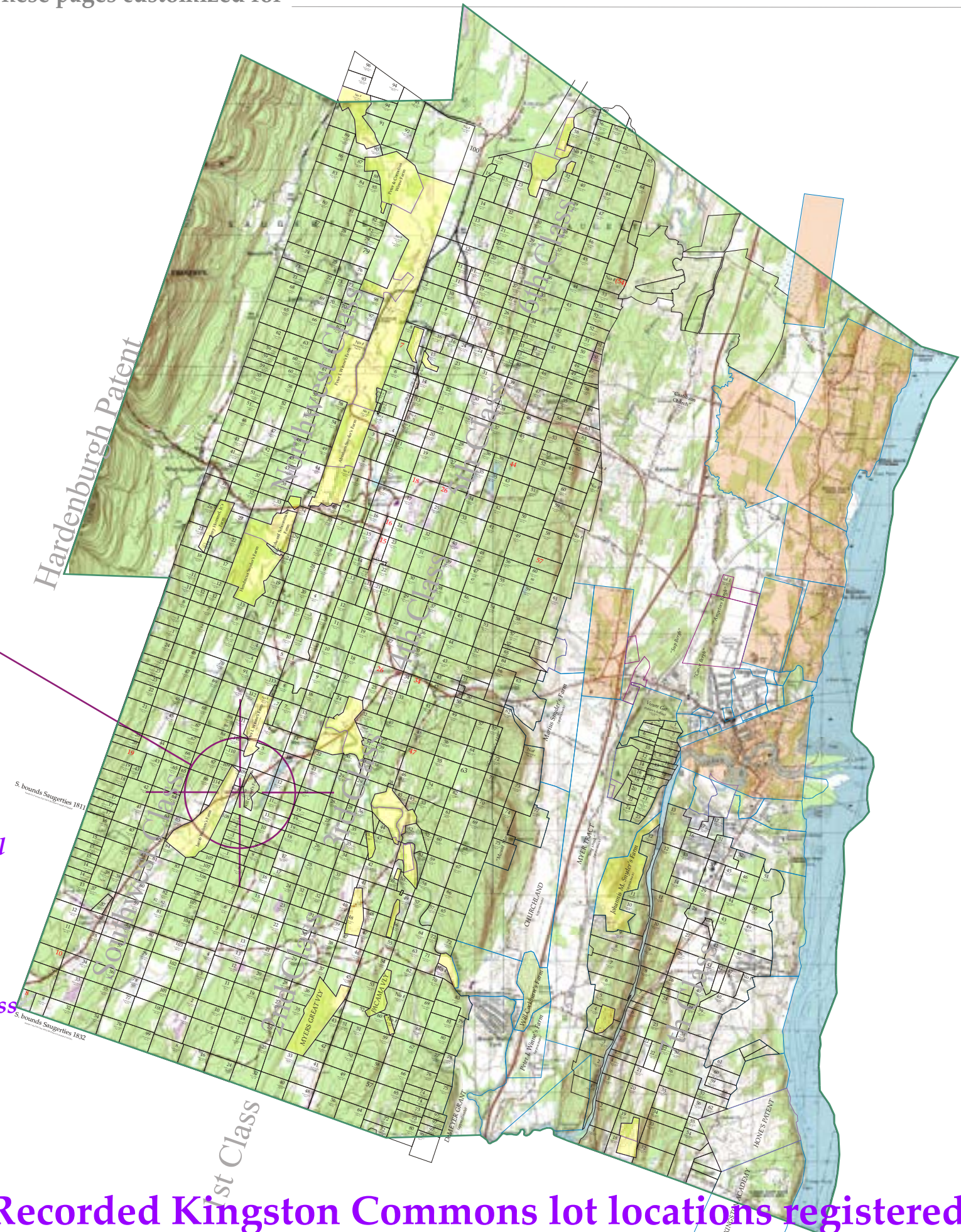
# A History Atlas of Saugerties

These pages customized for \_\_\_\_\_



## Your Place In History

*Saugerties' first division into property lines began in 1687 when it was included in the territory of the Kingston Patent. When the "Corporation of Kingston" began dividing itself into lots in 1804 those lots in Saugerties fell within the first, second, third, fourth, fifth, sixth, seventh, northwest and southwest classes. Most properties in Saugerties can trace their titles back to one or more lots in these classes of the "Kingston Commons". Saugerties was, for over 200 years before this division, land commonly held by all the inhabitants of Kingston. Each originating deed from one of the lots in a class of the Kingston Commons in Saugerties carries restrictions that recognize the continuing rights of other inhabitants of the land in perpetuity.*



**Recorded Kingston Commons lot locations registered to current Saugerties area USGS topographic map**

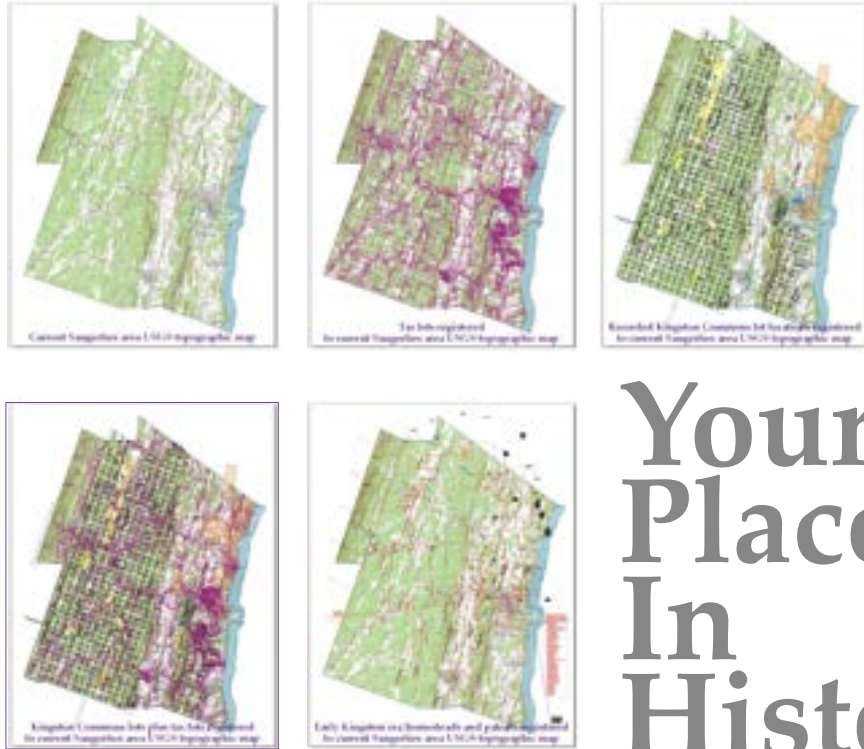


[Return to Main Page](#)



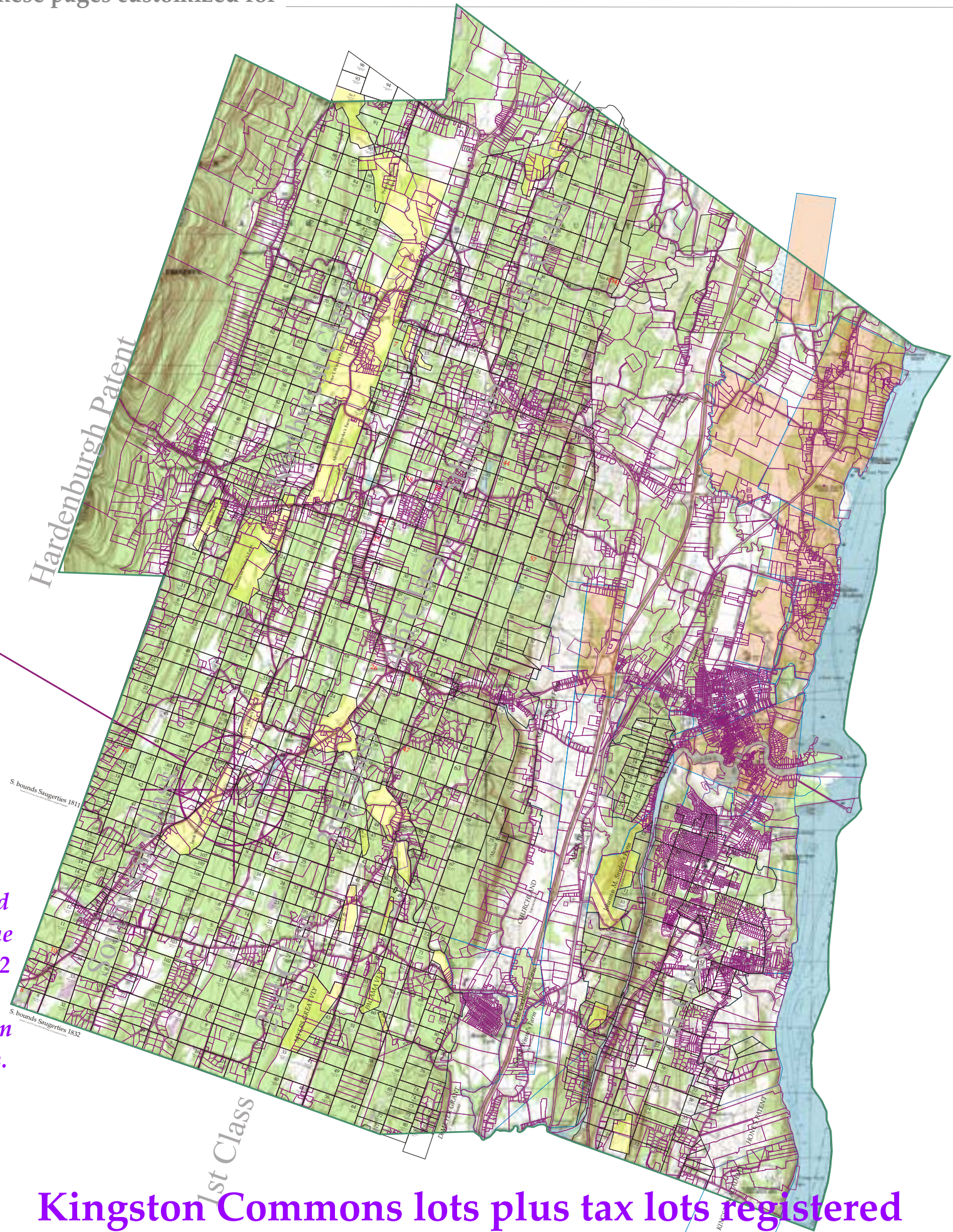
# A History Atlas of Saugerties

These pages customized for \_\_\_\_\_



## Your Place In History

*Few places in the Hudson Valley can trace the lineage of the land as accurately as in Saugerties. The commons lots were each surveyed and deeded to match a grid of rectangles that averaged 30 and 45 acres in size. The tilt of this grid was surveyed as 24 to 66 degrees as the cumpass pointed in 1803. When the Town of Saugerties was created in 1811 that angle and the division line between the 2nd and 3rd classes was made a corner and in 1832 when the 2nd class and the top tier of 1st class lots were added the same angle was retained. From this starting point every original commons lot can be plotted to its position relative to the current property lines of Saugerties.*



**Kingston Commons lots plus tax lots registered to current Saugerties area USGS topographic map**

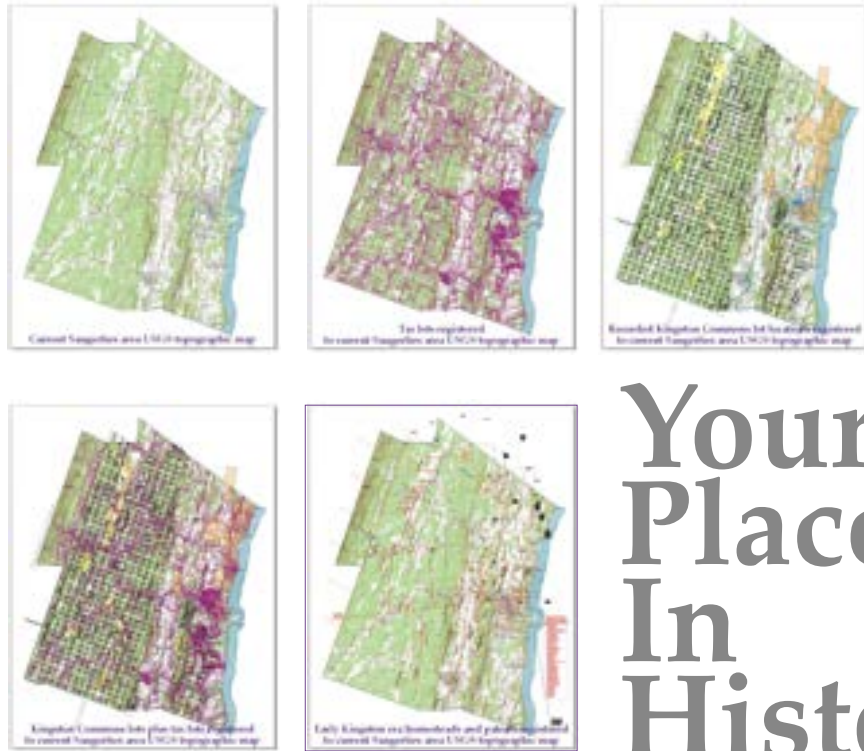


[Return to Main Page](#)



# A History Atlas of Saugerties

These pages customized for \_\_\_\_\_



## Your Place In History

*After the French and Indian War much of the claim of Kingston to the northern half of the current town of Saugerties was challenged in a scheme by the Lieutenant Governor of New York to transfer unclaimed land as bounty rewards to officers who served in the War. Maps were made at this time listing the inhabitants of Kingston that resided in this area and served in the Kingston Militia in the War to counter this move and claim the whole part for Kingston. These original maps have been keyed to known stone houses of the period and others not mapped that are known have been placed in relationship to these for a growing glimpse of the extent Saugerties was occupied in those earliest times.*



[Return to Main Page](#)

**Early Kingston era homesteads and patents registered to current Saugerties area USGS topographic map**